

Artículo original

Potencial Vector Eléctrico y la Ley de Biot-Savart en Electroestática

Electric Vector Potential and the Biot-Savart like law in Electrostatics

Robert Salazar^{1,*}, Camilo Bayona-Roa², Diego Jaramillo³

¹Universidad ECCI, Bogotá, Colombia.

²Centro de Ingeniería Avanzada Investigación y Desarrollo — CIAID, Bogotá, Colombia

³Departamento de Física, Facultad de Ciencias, Universidad Antonio Nariño, Bogotá, Colombia

Resumen

En este documento se presenta una formulación de potencial vectorial asociado al campo eléctrico para estudiar electrodos de superficie embebidos en un plano. Se muestra que el problema se puede abordar mediante la solución de la ecuación de Laplace en el espacio libre, bajo condiciones de frontera de Neumann sobre las placas cuando la separación entre ellas tiende a cero. Se obtiene que campo eléctrico matemáticamente guarda una analogía con la ley de Biot-Savart de magnetostática. La estrategia permite generalizar dicho resultado analítico para su aplicación en la descripción de electrodos de superficie con separación entre las placas.

Palabras clave: Ley de Biot-Savart; potencial vector eléctrico; electrodo de superficie con y sin separación entre placas.

Abstract

A vector potential formulation is shown in this article to compute the electric field of planar surface electrodes. The electric field is derived from the solution of the Laplace's equation in the free-charge space. Neumann-boundary conditions must be set on the region between planar metallic sheets as the separation goes to zero. It is shown that the electric field can be written via a Biot-Savart-like integral. The strategy enables to generalize the analytical result for its application in the gaped surface electrodes description.

Keywords: Biot-Savart law; electric vector potential; gapless and gaped surface-electrode.

Introduction

In this document, we study a system composed of two metal sheets with a gap G in between (see Fig.1-left). The sheets lie on the xy -plane, and a constant potential difference is enforced in-between. For convenience, the potentials of the inner and outer sheets are V_0 and zero, respectively. This system is commonly referred to as *gaped Surface Electrode* (SE) (House, 2008; Salazar *et al.*, 2019, 2022; Schmied, 2010) and it plays an important role to model the static electric fields in SE ion traps where ion-trap networks including arrays of SE are also promising candidates in quantum processing (Chiaverini *et al.*, 2005; Seidelin *et al.*, 2006; Daniilidis *et al.*, 2011; Kim *et al.*, 2011; Hong *et al.*, 2017; Makhberi *et al.*, 2017; Tao *et al.*, 2018; Van Mourik *et al.*, 2020)

Citación: Salazar R, Bayona-Roa C, Jaramillo D. Potencial Vector Eléctrico y la Ley de Biot-Savart en Electroestática. Revista de la Academia Colombiana de Ciencias Exactas, Físicas y Naturales. 46(181):939-946, octubre-diciembre de 2022. doi: <https://doi.org/10.18257/raccefyn.1671>

Editor: Román Eduardo Castañeda-Sepúlveda

***Correspondencia:**

Robert Salazar; rsalazarr@eccci.edu.co

Recibido: 19 de abril de 2022

Aceptado: 30 de noviembre 2022

Publicado en línea: 30 de noviembre de 2022



Este artículo está bajo una licencia de Creative Commons Reconocimiento-NonCommercial-Compartir Igual 4.0 Internacional

The surface electrode also has practical relevance in antenna theory. For instance, when considering a time-varying voltage between the sheets. If the system is fed with a harmonic voltage source $V(t) = V_0 \exp(i\omega t)$ of angular frequency ω , then the SE will radiate electromagnetic waves that will mostly depend on the geometry of the gap G and ω . This time-dependent version of the SE is a type of dipole-blade antenna (Balanis, 2015; Hicks *et al.*, 2012). Those antennas play a role in astronomic radio-telescopes (Mozdzen *et al.*, 2017). Here we restrict our description to the stationary case. However, the electrostatic of the SE is also important since in the low-frequency limit ($\omega/c \ll 1$, with c the velocity of light) the time-dependent solutions tend to the electrostatic profiles times harmonic phases.

In this article, we are interested in the electric field inside the charge-free region $D = \{\mathbb{R}^3 : z > 0\}$ and the surface charge density on the sheets $\{\mathbb{R}^2 : z = 0\} \setminus G$. The boundary of the region of interest D is denoted as ∂D . Authors of Ref. (Oliveira & Miranda, 2001) have shown that the electric field E in D can be computed via a Biot-Savart-like law when the gap region is infinitely thin. They proved the relationship by using analogies with magneto-statics, specifically by comparing the scalar magnetic potential of a planar loop carrying a steady current and the electric potential of the electrostatic system.

The alternative strategy in this article consists in writing the electric field $E = \nabla \times \Theta$ as the curl of a vector potential Θ in the free-charge region, where the electric field is divergenceless $\nabla \cdot E = 0$. Since the Laplacian of the electric vector potential is $\nabla^2 \Theta = \nabla \times \Theta - \nabla(\nabla \cdot \Theta)$, it can be reduced to the simpler equation

$$\nabla^2 \Theta(r) = (\nabla^2 \Theta_x(r), \nabla^2 \Theta_y(r), \nabla^2 \Theta_z(r)) = 0, \quad r \in D \cup G, \quad (1)$$

because every time-independent electric field is irrotational $\nabla \times E = 0$ and one can impose a Gaussian Gauge condition $\nabla \cdot \Theta = 0$ on the vector potential. The electric potential vector has been employed in different contexts where the use of Θ can be advantageous in comparison with the scalar electric potential i.e. numerical studies via Finite Element Method for electrostatics (Semenov *et al.*, 2006), and engineering problems (Landis, 2002; Stark *et al.*, 2015; Albanese & Rubinacci, 1990; Zhang & Wang, 1999). We show that solving the Laplace's equation (1) together with Neumann boundary conditions on the finite gap will equally derive in the Biot-Savart law like formula: An integral description of the electric field without resorting to the magneto-statics analogy.

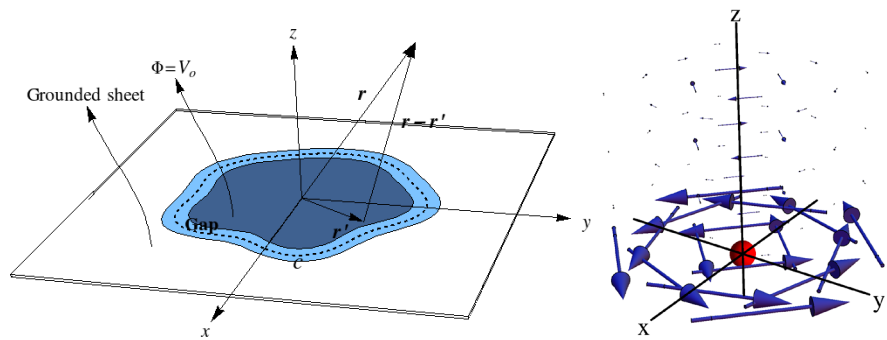


Figure 1. The physical system. A gaped SE is composed of two flat sheets at different electric potentials separated by a gap in between (left). Electric vector potential of a punctual charged particle (right).

The classical approach to derive the electric field of planar surface electrodes in Ref. (Oliveira & Miranda, 2001) has been to map the traditional Dirichlet problem onto the much simpler Biot-Savart-like problem: The integral expression for the electric field due to an arbitrarily shaped planar region kept at a fixed electric potential and embedded in a grounded

plane. A similar approach has been proved efficient in (Salazar *et al.*, 2019). As shown in Ref. (Salazar *et al.*, 2020), one can obtain the Biot-Savart law without solving the Laplace's equation. That alternative derivation is by employing the Helmholtz decomposition and Green's theorems. The current proposal is a first attempt to understand the transient phenomenon, being the difference regarding the previously published works on this subject by the authors.

Many contemporary applications such as antennas, electron traps, and microprocessor boards include this phenomenology and require efficient descriptions of the electric field. Indeed, SE are a promising candidates to build ion-trap networks suitable for large-scale quantum processing (Seidelin *et al.*, 2006; Chiaverini *et al.*, 2005; Daniilidis *et al.*, 2011; Kim *et al.*, 2011; Hong *et al.*, 2017; Mokheri *et al.*, 2017; Tao *et al.*, 2018; Van Mourik *et al.*, 2020). The remaining parts of this article derive the Biot-Savart law with the alternative approach.

Solution of the Laplace's equation

In this section, we formulate the system in terms of the vector potential Θ to calculate the electric field in the free-charge space. For a single punctual charged particle this vector potential takes the following form*

$$\Theta_{punctual}(r) = \frac{q}{4\pi\epsilon_0} \frac{\csc\theta - \tan\theta}{r} \hat{\phi}. \quad (2)$$

A plot of this vector potential is shown in Fig. 1-right. One can understand that the battery (responsible for the difference potential V_o between the electrode sheets) removes negative charges from the inner metal sheet and transfers them to the outer sheet. The total electric vector potential of the system comes from a superposition of individual electric vector potentials (of each punctual charge on the sheets). Since Eq. (2) does not have z -component one can expect that total vector potential fulfills $\Theta \cdot \hat{z} = 0$.

In the free-charge region the vector potential Θ satisfies the Laplace's equation Eq. (1). The Laplacian equation is a particular case of the more-general Poisson equation

$$\nabla^2\Theta(r) = S(r)$$

where S is a source vector term. The analytical solution of the previous problem can be obtained through the Green's function,

$$\Theta_i(r) = - \int_D G(r, r') S_i(r) d^3 r' + \oint_{\partial D} [\Theta_i(r') \nabla' G(r, r') - G(r, r') \nabla' \Theta_i(r')] \cdot dS, \quad (3)$$

with the $\{i\} = \{x, y, z\}$ notation and $G(r, r')$ the Green's function. Since there are no electric charges in D the source term in the Laplace's equation is zero. Therefore, the surface term is the only integral that contributes in Eq. (3):

$$\Theta_i(r) = \oint_{\partial D} [\Theta_i(r') \nabla' G(r, r') - G(r, r') \nabla' \Theta_i(r')] \cdot dS$$

This last result can be written in Cartesian coordinates by only considering the surface contribution of the electrodes laying on the xy - plane,

$$\Theta_i(r) = - \int_{\mathbb{R}^2} \Theta_i(r') \partial_{z'} G(r, r') - G(r, r') \partial_{z'} \Theta_i(r') \Big|_{z'=0} dx' dy'.$$

*The formula for the vector potential can be found straightforwardly from the electric field of a punctual particle

$$E_{punctual} = \frac{1}{4\pi\epsilon_0} \frac{q}{r^2} \hat{r}$$

and the $E = \nabla \times \Theta$ identity under Gauss gauge condition $\nabla \cdot \Theta = 0$.

In order to close the problem, we shall consider the Neumann boundary conditions for the vector potential on the xy -plane. Thus, the Green's function can be designed to satisfy $G = G_N(r, r')$, with

$$\nabla' G(r, r') \cdot \hat{z} = \partial_{z'} G(r, r') \Big|_{z'=0} = 0 \tag{4}$$

on the xy -plane. Hence, the definition of the vector potential simplifies to the solution of

$$\Theta_i(r) = \int_{\mathbb{R}^2} G_N(r, r') \partial_{z'} \Theta_i(r') \Big|_{z'=0} dx' dy'. \tag{5}$$

Note also that the electric field on the metallic sheets is computed from the curl of the vector potential. The electric field may be calculated by approaching the sheets on the xy -plane from the z -direction:

$$\lim_{z \rightarrow 0^+} E = (0, 0, E_z) = (\partial_y \Theta_z - \partial_z \Theta_y, \partial_z \Theta_x - \partial_x \Theta_z, \partial_x \Theta_y - \partial_y \Theta_x) \quad \forall (x, y, 0) \notin G.$$

For the single static punctual source, the z -component of the vector potential is exactly zero $\Theta_{punctual}(r) \cdot \hat{z} = 0$ (see Eq. 2). The same occurs to the global vector potential due to the charge distributions on the metallic sheets. That is explained since the global vector potential is the superposition of potentials due to punctual charges. Therefore, $\Theta_z(r) = 0$, and

$$\lim_{z \rightarrow 0^+} E = (0, 0, E_z) = (-\partial_z \Theta_y, \partial_z \Theta_x, \partial_x \Theta_y - \partial_y \Theta_x) \quad \forall (x, y, 0) \notin G.$$

The previous result implies that

$$\partial_z \Theta(r) \Big|_{z=0} = 0 \quad \forall (x, y, 0) \notin G.$$

It means that the normal derivative of the vector potential on the xy -plane is zero everywhere except on the gap region, hence

$$\Theta_i(r) = \int_{\mathbb{R}^2} G_N(r, r') \partial_{z'} \Theta_i(r') \Big|_{z'=0} dx' dy' = \int_G G_N(r, r') \partial_{z'} \Theta_i(r') \Big|_{z'=0} dx' dy'. \tag{6}$$

On the other hand, the electric field on the gap region between the sheets can be also computed by evaluating the limit

$$\lim_{z \rightarrow 0} E = (E_x, E_y, 0) = (-\partial_x \Phi, -\partial_y \Phi, 0) = (-\partial_z \Theta_y, \partial_z \Theta_x, \partial_x \Theta_y - \partial_y \Theta_x) \quad \forall (x, y, 0) \in G.$$

As a result, the z -derivative of the vector potential on the gap $\partial_z \Theta =: -W$ is related to the scalar potential, as follows

$$\partial_z \Theta = (-\partial_y \Phi, \partial_x \Phi, 0) := -W \quad \forall (x, y, 0) \in G.$$

It is convenient to write vector W in polar coordinates $r = (u, \phi, z)$ on the gap region, as follows

$$W(u, \phi, z) = -\frac{1}{u} \frac{\partial \Phi}{\partial \phi} \hat{u} + \frac{\partial \Phi}{\partial u} \hat{\phi} \quad \forall (u, \phi, 0) \in G.$$

Thus, Eq. (6) takes the form

$$\Theta(r) = - \int_G G_N(r, r') W(r') d^2 r'. \tag{7}$$

Now, regarding the definition of the Green's function in Eq. (7), one can use the method of images and propose $G_N(r, r')$ as the function of two punctual identical charges symmetrically placed at z' and $-z'$,

$$G_N(r, r') = -\frac{1}{4\pi} \frac{1}{|r - r'|} + \left[-\frac{1}{4\pi} \frac{1}{|r - r'|} \right]_{z' \rightarrow -z'}, \quad \text{hence} \quad \lim_{z' \rightarrow 0} G_N(r, r') = -\frac{1}{2\pi} \frac{1}{|r - r'|} \Big|_{z'=0}.$$

It can be shown straightforwardly that this definition of the Green's function fulfills the boundary condition in Eq. (4). Finally, by replacing the previous Green's function definition into Eq. (7) the vector potential can be written as

$$\Theta(r) = \frac{1}{2\pi} \int_G \frac{W(r')}{|r-r'|} d^2r', \quad (8)$$

which is the solution of the Laplace's equation of the electric vector potential imposing Neumann boundary conditions on the gap region G . One can observe that electric vector potential in Eq. (8) is mathematically equivalent to the standard vector potential in magnetostatics $A(r)$ (Jackson, 1999), computed from

$$A(r) = \frac{\mu_0}{4\pi} \int_G \frac{K(r')}{|r-r'|} d^2r', \quad (9)$$

with $K(r')$ a steady surface density current and $B = \nabla \times A$ the magnetic field. In fact, both vector potentials A and Θ can be used to compute the B and E fields in the free-space. If we study Eq. (9), one could state that electric currents are sources of the magnetic vector potential in a Coulomb-like way. Similarly, spatial variations on the electric scalar potential would be the sources of $\Theta(r)$ according to Eq. (8). Unfortunately, these interpretations are quite subjective since *both vectors potentials are not physically observable under a classical viewpoint* since they are not unique: Vector potentials depend on a certain gauge choice (i.e. a Coulomb gauge).

Thus, the electric field is found from the curl of the vector potential,

$$E = \nabla \times \Theta = \frac{1}{2\pi} \int_G \nabla \times \frac{W(r')}{|r-r'|} dr' \quad \text{for } z > 0.$$

Using the vector identity $\nabla \times [\lambda(r, r')F(r')] = \nabla\lambda \times F(r')$ with $\lambda = |r - r'|^{-1}$, one finally obtains the Biot-Savart like law

$$E(r) = \frac{1}{2\pi} \int_G \frac{W(r')(r-r') \times d^2r'}{|r-r'|^3}. \quad (10)$$

The electric field in Eq. (10) is the electrostatic analogue of the magnetic field due to a closed ribbon on the G region carrying a constant surface density current $K(r)$. An analogous role is played by $W(r)$ in the SE electrostatic system. The Biot-Savart-like in Eq. (10) provides an integral solution of the electric field when the $W(r)$ field is known. That is exactly the gapless limit case, where electrodes are infinitely close each other. In general, $W(r)$ is unknown and it must be constructed over G for gaped SE. In those cases $W(r)$ can be computed by approximating the scalar electric potential Φ on the gap region. One strategy to approximate Φ on the gap forces the zero charge condition on the mid trajectory on the gap. That strategy has been originally developed for the circular gaped SE in (Schmied, 2010). The same approach can be applied for arbitrary geometry gaped SE (Salazar *et al.*, 2022). Therefore, one can understand the vector potential approach Θ here presented as a versatile way to find solutions in electrostatics. It fits better the nature of gaped SE problems rather than the traditional electric scalar potential Φ .

The gapless limit

In the gapless limit, the G region is infinitely thick and it becomes a closed loop c . For instance, if G is an annular region of ΔR thickness

$$G = \{(u, \phi) : R - \Delta R/2 < u < R + \Delta R/2 \wedge \phi \in [0, 2\pi]\},$$

then G becomes a circular loop of radius R in the $\Delta R \rightarrow 0$ limit. In this limit, one can also compute the W vector since the potential on $z = 0$ is

$$\lim_{\Delta R \rightarrow 0} \Phi(u, \phi, 0) = V_o \quad \text{if} \quad u < R \quad \text{otherwise} \quad 0.$$

Hence, the W vector is computed from

$$\lim_{\Delta R \rightarrow 0} W = \lim_{\Delta R \rightarrow 0} -\partial_u \Phi(u, \phi, 0) \hat{\phi} = V_o \delta(u - R) \hat{\phi}, \quad (11)$$

where the derivative of the unit step function is a Dirac delta function. Replacing Eq. (11) into the surface integral Eq. 10, it becomes the following loop integral

$$E = \frac{V_o}{2\pi} \oint_c \frac{(r - r') \times dr'}{|r - r'|^3} \quad \text{for} \quad z > 0,$$

where the c loop is counter-clock-wisely defined with respect to the z -axis. The result also is valid for an arbitrary closed loop. The central result in Ref. (Oliveira & Miranda, 2001) is recovered from Eq. (10) in the gapless limit.

Conclusions

The electric field of planar metal sheets under a constant potential difference separated by a gap region has been studied in this article. The electric field is merely a Biot-Savart like integral on the gap region. The integral expression has been the solution of the Laplace's equation of the electric vector potential associated with the electric field under Neumann boundary conditions on the gap. In that sense, the vector potential formulation has described the electric field of planar surface electrodes instead of the scalar potential approach. We have proved that results in Ref. (Oliveira & Miranda, 2001) can be equally derived from Eq. (10) in the particular case of an infinitely thin gap.

As a future work, one can study the non-stationary surface electrode where the metal sheets are set to a time dependent scalar potential. This type of system is also important for engineering since it is basically a dipole blade radiator. In that case, the electric vector potential $\Theta(r)$ satisfies a wave equation which is essentially a 4-dimensional Laplacian under an appropriate way to chose the Gauge. In this document we showed that it is possible to determine the electric field of the system by solving the Laplace's equation for the electric vector potential. It is known that a time-dependent generalization of the magnetic vector potential in Eq. (9) concerns the retarded solution of the wave equation (Jackson, 1999).[†]

The question is if there exist a retarded version of the electric vector potential Θ which enable us to compute the radiated electric field via $E(r, t) = \nabla \times \Theta(r, t)$. Resembling over Eqs. (8) and (9), one can expect that the electric vector potential would certainly have a retarded formula for the dynamic propagation case. As a future work we expect to generalize the strategy presented in this document to find the time-dependent version of the electric vector potential.

The present article demonstrated another plausible approach to studying the gaped SE advantageous regarding Ref. (Salazar *et al.*, 2020) since it becomes mathematically simpler. That is constructing the electric vector potential from a superposition of vector potentials

[†]As presented in the reference, the time-dependent version of Eq. (9) is given by

$$A(r, t) = \frac{\mu_o}{4\pi} \int_G \frac{K(r', t_{ret})}{|r - r'|} d^2 r'$$

where t_{ret} refers to the retarded time $t_{ret} := t - |r - r'|/c$, with c the velocity of light, and the radiated magnetic field $B(r, t) = \nabla \times A(r, t)$.

of individual static charges (see Fig. 1-right) on the metallic sheets and a Coulomb gauge condition. Results in Ref. (Salazar *et al.*, 2020) have been alternatively derived here and framed under an analytical strategy suitable to be generalized for time-dependent versions of the gaped SE.

Acknowledgments

This work was partially supported by Vicerrectoría de investigación, Universidad ECCI. C. Bayona-Roa acknowledges the technical support given by the Centro de Ingeniería Avanzada y Investigación y Desarrollo – CIAID.

Contribución de los autores

RS and CBR conceived of the presented idea. All the authors developed the theory. DJ verified the analytical methods. All authors discussed the results and contributed to the final manuscript.

Conflicts of Interest Statement

The authors declare that they have no conflicts of interest.

References

- Albanese, R., Rubinacci, G. (1990). Treatment of multiply connected regions in two-component electric vector potentials formulations. *IEEE transactions on magnetics*, 26(2), 650-653. doi: 10.1109/20.106401
- Balanis, C. A. (2015). *Antenna theory: analysis and design*. John Wiley & sons.
- Chiaverini, J., Blakestad, B. R., Britton, J. W., Jost, J. D., Langer, C., Leibfried, D. G., Wineland, D. J. (2005). Surface-electrode architecture for iontrap quantum information processing. *Quantum Information and Computation*, 5(Quantum Information and Computation). doi: 10.1088/1367-2630/12/2/023038
- Daniilidis, N., Narayanan, S., Möller, S. A., Clark, R., Lee, T. E., Leek, P. J., Häffner, H. (2011). Fabrication and heating rate study of microscopic surface electrode ion traps. *New Journal of Physics*, 13(1), 013032. doi: 10.1088/1367-2630/13/1/013032
- Hicks, B. C., Paravastu-Dalal, N., Stewart, K. P., Erickson, W. C., Ray, P. S., Kassim, N. E., Burns, S., Clarke, T., Schmitt, H., Craig, J., Hartman, J., Weiler K. W. (2012). A wide-band, active antenna system for long wavelength radio astronomy. *Publications of the Astronomical Society of the Pacific*, 124(920), 1090. doi: 10.1086/668121
- Hong, S., Lee, M., Kwon, Y.-D., Dan Cho, Dong-II, Kim, T. (2017). Experimental methods for trapping ions using microfabricated surface ion traps. *JoVE (Journal of Visualized Experiments)*, (126), e56060. doi: 10.3791/56060
- House, M. (2008). Analytic model for electrostatic fields in surface-electrode ion traps. *Physical Review A*, 78(3), 033402. doi: 10.1103/PhysRevA.78.033402
- Jackson, J. D. (1999). *Classical electrodynamics*. JhonWiley & Sons, Inc.
- Kim, T. H., Herskind, P. F., Chuang, I. L. (2011). Surface-electrode ion trap with integrated light source. *Applied Physics Letters*, 98(21), 214103. doi: 10.1063/1.3593496
- Landis, C. M. (2002). A new finite-element formulation for electromechanical boundary value problems. *International Journal for Numerical Methods in Engineering*, 55(5), 613-628. doi: 10.1002/nme.518
- Mokhberi, A., Schmied, R., & Willitsch, S. (2017). Optimised surface-electrode ion-trap junctions for experiments with cold molecular ions. *New Journal of Physics*, 19(4), 043023. doi: 10.1088/1367-2630/aa6918
- Mozden, T., Bowman, J., Monsalve, R., Rogers, A. (2017). Improved measurement of the spectral index of the diffuse radio background between 90 and 190 mhz. *Monthly Notices of the Royal Astronomical Society*, 464(4), 4995-5002. doi: 10.1093/mnras/stw2696

- Oliveira, M. H., Miranda, J. A.** (2001). Biot-savart-like law in electrostatics. *European Journal of Physics*, 22(1), 31. doi: 10.1088/0143-0807/22/1/304
- Salazar, R., Bayona, C., Chaves, J.** (2019). Electrostatic field of angular-dependent surface electrodes. *The European Physical Journal Plus*, 135(93). doi: 10.1140/epjp/s13360-019-00090-3
- Salazar, R., Bayona, C., Téllez, G.** (2020). Electric vector potential formulation in electrostatics: Analytical treatment of the gaped surface electrode. *The European Physical Journal Plus*, 135(878). <https://doi.org/10.1140/epjp/s13360-020-00864-0>
- Salazar, R., Bayona, C., Tellez, G.** (2022). Monte carlo simulations of twocomponent coulomb gases applied in surface electrodes. *Journal of Physics: Condensed Matter*, 34(14), 144007. doi: 10.1088/1361-648X/ac4aa8
- Schmied, R.** (2010). Electrostatics of gapped and finite surface electrodes. *New Journal of Physics*, 12(2), 023038. doi: 10.1088/1367-2630/12/2/023038
- Seidelin, S., Chiaverini, J., Reichle, R., Bollinger, J. J., Leibfried, D., Britton, J., Wesenberg, J. H., Blakestad, R. B., Epstein, R. J., Hume, D. B., Itano, W. M., Jost, J. D., Langer, C., Ozeri, R., Shiga, N., Wineland D. J.** (2006). Microfabricated surface-electrode ion trap for scalable quantum information processing. *Physical review letters*, 96(25), 253003. (doi: 10.1103/PhysRevLett.96.253003)
- Semenov, A., Kessler, H., Liskowsky, A., Balke, H.** (2006). On a vector potential formulation for 3d electromechanical finite element analysis. *Communications in Numerical Methods in Engineering*, 22(5), 357-375. doi: 10.1002/cnm.818
- Stark, S., Semenov, A. S., Balke, H.** (2015). On the boundary conditions for the vector potential formulation in electrostatics. *International Journal for Numerical Methods in Engineering*, 102(11), 1704-1732. doi: 10.1002/nme.4859
- Tao, J., Chew, N. P., Guidoni, L., Lim, Y. D., Zhao, P., Tan, C. S.** (2018). Fabrication and characterization of surface electrode ion trap for quantum computing. In *2018 IEEE 20th electronics packaging technology conference (eptc)* (pp. 363-366). doi: 10.1109/EPTC.2018.8654328
- Van Mourik, M. W., Martinez, E. A., Gerster, L., Hrmo, P., Monz, T., Schindler, P., Blatt, R.** (2020). Coherent rotations of qubits within a surface ion-trap quantum computer. *Physical Review A*, 102(2), 022611. <https://doi.org/10.1103/PhysRevA.102.022611>
- Zhang, G. J., Wang, G. L.** (1999). A new approach to sp computation-vector potential approach. *IEEE Transactions on Geoscience and Remote Sensing*, 37(4), 2092-2098. doi: doi: 10.1109/36.7747198