



REVISTA DE LA ACADEMIA
COLOMBIANA DE CIENCIAS
EXACTAS, FÍSICAS Y NATURALES

www.raccefyn.co

Supplementary information

Información suplementaria

Diversity and antibacterial activity of endophytic fungi of the Amazonian medicinal plant

sucuba [*Himatanthus sucuuba* (Spruce ex Müll. Arg.) Woodson]

Diversidad y actividad antibacteriana de hongos endofíticos de la planta medicinal amazónica sucuba

[*Himatanthus sucuuba* (Spruce ex Müll. Arg.) Woodson]

Maria Francineide Ribeiro-Gomes, *Fernanda Viana-Diniz, Atilon Vasconcelos de-Araújo,

Leila Priscila-Peters, Clarice Maia-Carvalho

*Corresponding author: e-mail: fvianadiniz@gmail.com

Content

- Figure S1
- Figure S2

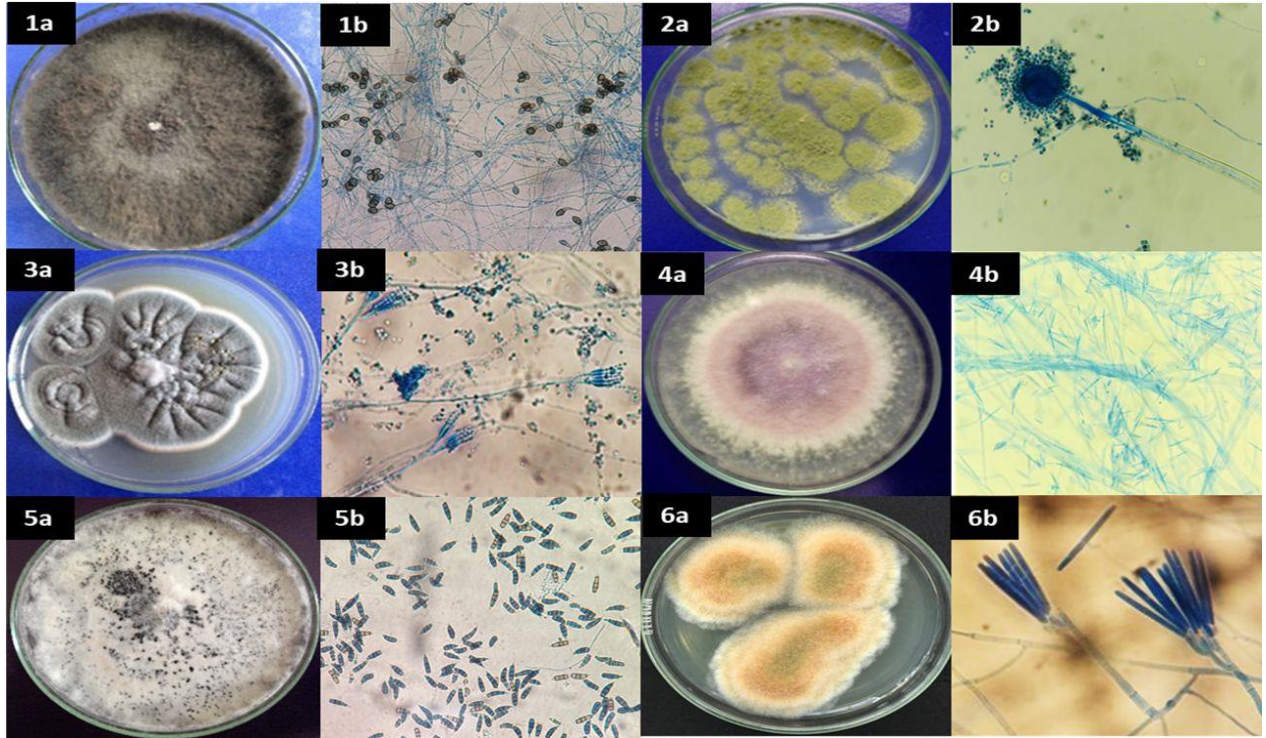


Figure S1. Macromorphology (macro) and micromorphology (micro) of endophytic fungi isolated from *Himanthus sucuuba*. 1a. *Colletotrichum* macro. 1b. micro *Colletotrichum*. 2a. *Aspergillus* macro. 2b. micro *Aspergillus*. 3a. *Penicillium* macro. 3b micro *Penicillium*. 4a. *Fusarium* macro. 4b. micro *Fusarium*. 5a. *Pestalotiopsis* macro. 5b. micro *Pestalotiopsis*. 6a. *Cylindrocladium* macro. 7b. micro *Cylindrocladium*.

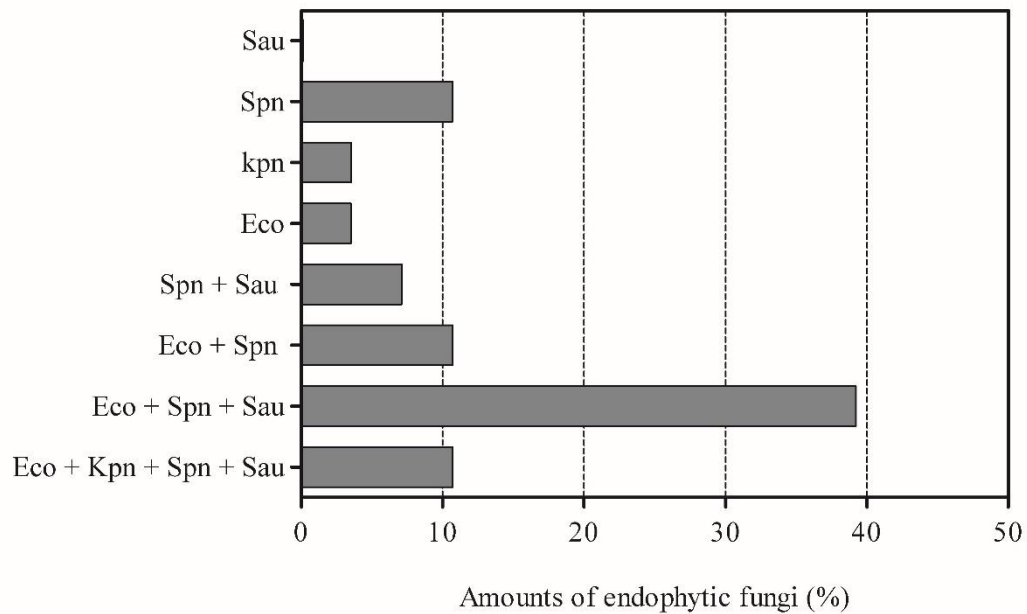


Figure S2. Antibacterial spectrum of endophytic fungi from *Himatanthus sucuuba*.

Note: Eco + Kpn + Spn + Sau – inhibition of growth of all bacteria: *Escherichia coli*, *Klebsiella pneumoniae*, *Streptococcus pneumoniae*, *Staphylococcus aureus*; Eco + Spn + Sau. – inhibition of growth of three respective bacteria; Eco + Spn, Spn + Sau – inhibition of growth of two respective bacteria; Eco, Kpn, Spn, Sau – inhibition of growth of one respective bacterium.