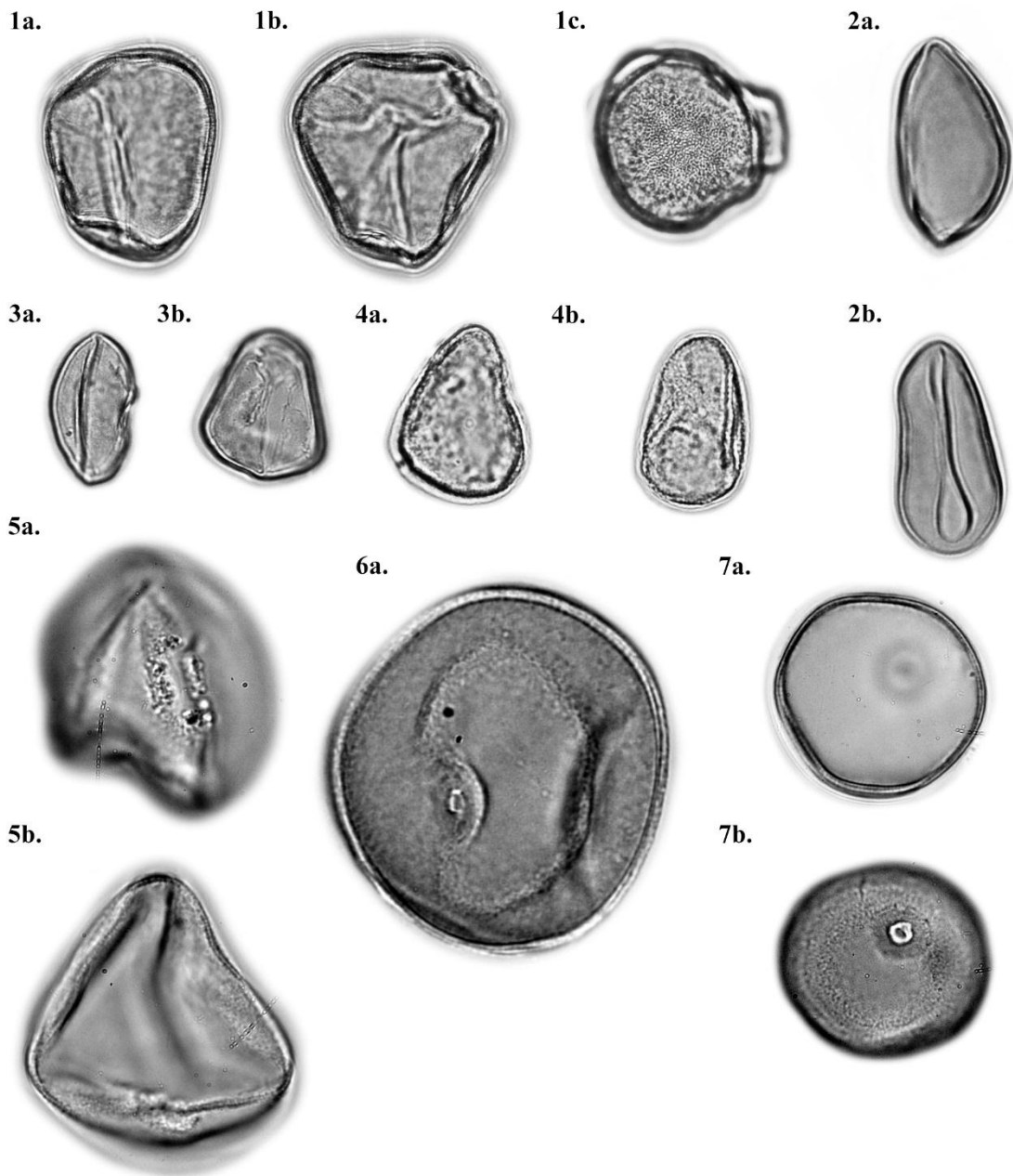


**Figura 1S.** ARECACEAE: 1. *Bactris gasipaes* var. *Chichagu*. 2. *Euterpe precatoria*. 3. *Geonoma interrupta*. CYPERACEAE: 4. *Rhynchospora barbata*. 5. *Scleria mitis*. POACEAE: 6. *Brachiaria brizantha*. 7. *Holcus lanatus*.



10μm